

London Best Practice Guidance

Emissions Reduction Solutions



The London Best Practice Guidance (BPG) affects Non-Road Mobile Machinery (NRMM) operating on sites within Greater London. The London BPG has been developed to control dust and emissions from construction and demolition. The requirements are defined according to the risk level defined for each site.

	Area	No. of Properties	Impact on 'Sensitive Receptors'
High Risk Sites	>15,000 m ²	>150	Significant
Medium Risk Sites	1,000 - 15,000 m ²	10 - 150	Intermittent
Low Risk Sites	<1,000 m ²	1 - 10	Infrequent

'Sensitive Receptors' include schools, hospitals and housing

Major developments as referred to by the Mayor of London or a London Borough would also be defined as high risk sites. For high risk sites, control measures that should be used include:

- All non-road mobile machinery (NRMM) to use ultra low sulphur diesel (ULSD)
- NRMM greater than 37kW to be fitted with approved exhaust after treatment
- On-road vehicles to comply with the requirements of the London Low Emission Zone (LEZ)
- Hard surfacing, cleaning and appropriate speed limits on all haul routes
- All loads entering and leaving sites to be covered

Emissions Reduction Systems

EminoX exhaust after-treatment systems are approved for use as part of the London BPG and are included on the Energy Saving Trust (EST) NRMM register of approved exhaust after treatment devices and suppliers. Our emissions products have been used extensively as part of air quality improvement programmes across Europe, with almost 60,000 systems supplied to date.



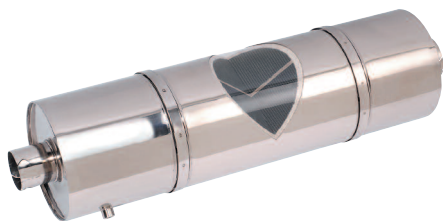
The Eminox CRT® system:



- Virtually eliminates particulate matter, hydrocarbons and carbon monoxide.
- Combines an oxidation catalyst and ceramic wall flow filter.
- Particularly effective in removing ultra-fine particles (below one micron) which are considered the most damaging to health.
- Is supplied with an Electronic Service Indicator (ESI) to give alerts on maintenance requirements.
- Is a highly effective, durable and proven technology.



The Eminox FBC Active system:



- Can reduce Particulate Matter emissions by more than 90%.
- Uses a silicon carbide filter to trap particulate matter including ultra fine particles.
- Compact system uses Satacen® fuel additive instead of a catalyst section.
- Active Regeneration option controls back pressure and avoids potential filter blocking.
- Is supplied with an intelligent dosing system with built in warning functions to give alerts on maintenance requirements.

All Eminox systems are manufactured from high grade stainless steel, with modular construction for ease of maintenance.

Systems available as complete purchase packages or filter hire packages.

As part of our Aftersales Service and Support, we recommend our specialist filter cleaning service with filter exchange options.

Contact Us

To discuss your individual requirements, please contact our London BPG team:

Tel: 01427 810088 **Email:** bpg@eminox.com

North Warren Road Gainsborough DN21 2TU United Kingdom

Tel: +44 (0)1427 810088 **Fax:** +44 (0)1427 810061 **Email:** enquiry@eminox.com

