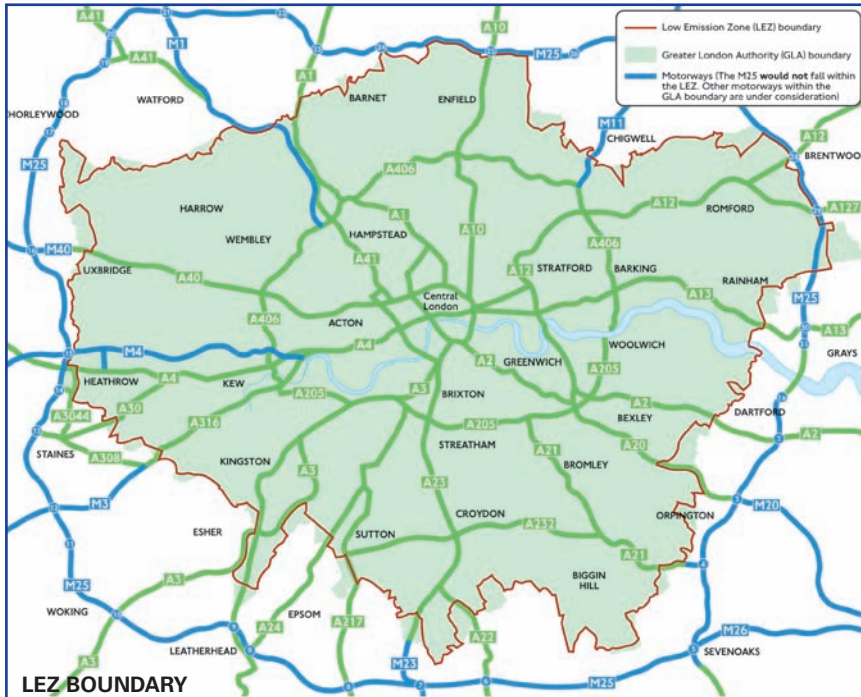


Clean Up for the London LEZ

Do you need to buy new vehicles?

Vehicles do not have to be replaced to meet the London Low Emission Zone (LEZ) requirements; many can be upgraded at a fraction of the cost.



The London LEZ, which covers the Greater London area excluding the M25, will be implemented in phases from February 2008.

Vehicles	Phase 1 Euro 3 Date Affected	Phase 2 Euro 4 Date Affected	Daily Charge
HGVs >12t	February 2008	2012	£200
HGVs 3.5t-12t	July 2008	2012	£200
Coaches	July 2008	2012	£200
Buses	July 2008	2012	£200
Heavier LCVs (2t-3.5t)	2010	Compliant	£100
Minibuses (8-16 passengers)	2010	Compliant	£100

Failure to pay the daily charge would result in penalty charges. Please visit www.tfl.gov.uk/lezlondon for full details.

Eminox is the leading European emissions specialist, with approximately 50,000 systems supplied worldwide. We have a range of diesel particulate filter (DPF) technologies to achieve both the 2008 and 2012 LEZ standards.

Not all DPF technologies are the same, Eminox offers long term solutions for Pre-Euro to Euro 2 and Euro 3 vehicles.

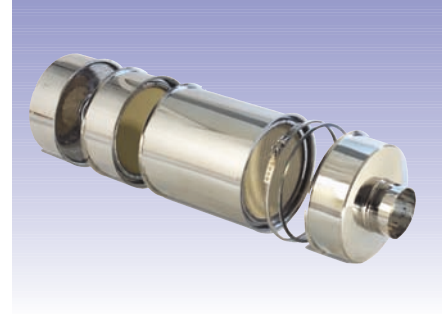
A Reduced Pollution Certificate (RPC) or Low Emission Certificate (LEC) will identify vehicles which have been upgraded to the required standard. Vehicles with a RPC will also be entitled to a reduction of up to £500 on Vehicle Excise Duty (VED).



Our Products

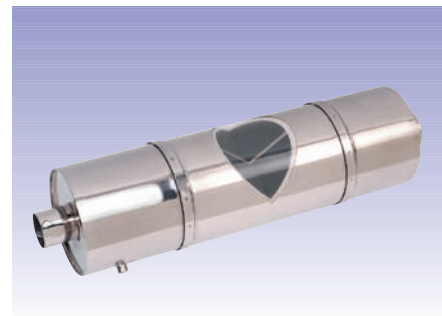
The Eminox CRT® system:

- Virtually eliminates particulate matter, hydrocarbons and carbon monoxide.
- Combines an oxidation catalyst and ceramic wall flow filter.
- Particularly effective in removing ultra-fine particles (below one micron) which are considered the most damaging to health.
- Has been part of environmental programmes in towns and cities across Europe.
- Is supplied with an Electronic Service Indicator (ESI) to give visual alerts on maintenance requirements.
- Is a highly effective, durable and proven technology.



The Eminox FBC system:

- Can reduce Particulate Matter emissions by more than 90%.
- Uses a silicon carbide filter to trap particulate matter including ultra fine particles.
- Copes with the higher particulate emissions of older pre-Euro and Euro 1 engines.
- Compact system uses Satacen® 3 fuel additive instead of a catalyst section.
- Active Regeneration option controls back pressure and avoids potential filter blocking.
- Is supplied with an intelligent dosing system with built in visual warning functions to give alerts on maintenance requirements.
- Simple robust design for durability.



LEC + CRT or FBC = Compliance

RPC + CRT or FBC = Compliance + up to £500 VED saving

All Eminox systems are manufactured from high grade stainless steel, with modular construction for ease of maintenance.

As part of our After Sales Service and Support, we recommend our specialist filter cleaning service with filter exchange options.

Contact Us

For further help and advice, on the best solutions for your vehicles, contact our LEZ team:

Tel: 01427 810088
Email: lez@eminox.com
Web: www.eminox.com



North Warren Road
Gainsborough DN21 2TU
United Kingdom

Tel: +44 (0)1427 810088
Fax: +44 (0)1427 810061

CRT® is a Registered Trademark of Johnson Matthey plc
Satacen® 3 fuel additive is a Registered Trademark of Innospec

© Eminox 2007 001.04.07 LEZ - UK

Exhaust Engineering Excellence

www.eminox.com